

Mubea

U-MOBILITY



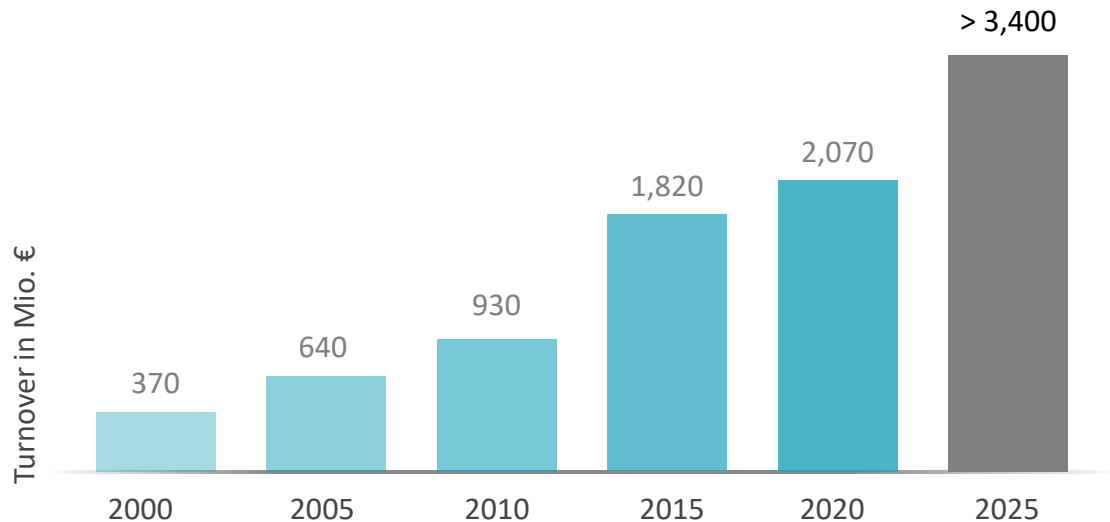
MUBEA U-MOBILITY

COMPANY PRESENTATION

- Family-owned business since 1916
- World market leader in the development and manufacture of complex automotive components
- Innovative lightweight specialist
- Vertical integration from raw material to end product
- Focus on technical innovations and sustainable business development with an impact on the environment



Mubea in numbers



Key figures 2022

2,977

billion € turnover

14,000

employees

50

locations

10%

investment ratio as a
proportion of
turnover

26,845

submitted
improvement
suggestions

107

years of experience

NORTH & SOUTH AMERICA:

- › 5 Locations
- › 2,500 Employees

EUROPE:

- › 31 Locations
- › 9,700 Employees

ASIA:

- › 14 Locations
- › 1,800 Employees

- ▲ Headquarter Attendorf
- Locations



Our mission

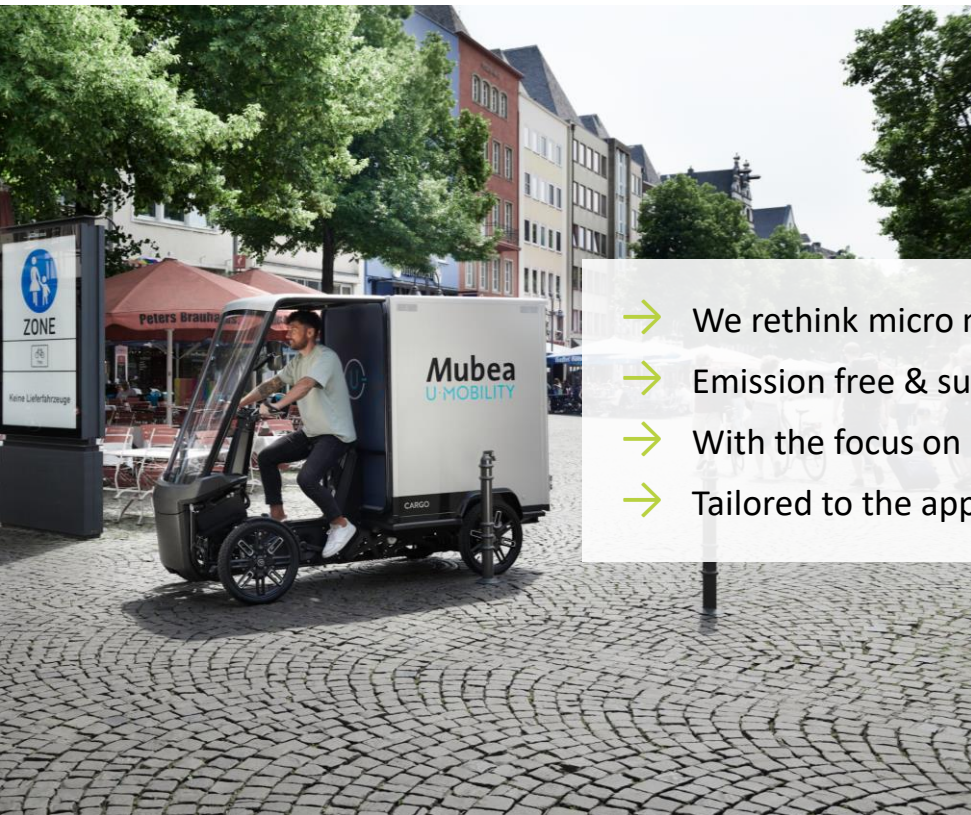


“As innovative lightweight specialist Mubea is shaping sustainability within the automotive industry. With the foundation of Mubea U-Mobility we think mobility beyond the automobile. We develop emission-free micro mobility vehicles which reach a new level of robustness, functionality and driver safety.

For sustainable, comfortable and efficient urban mobility and logistics.“

Dr.-Ing. Dr.-Ing. E.h. Thomas Muhr, CEO

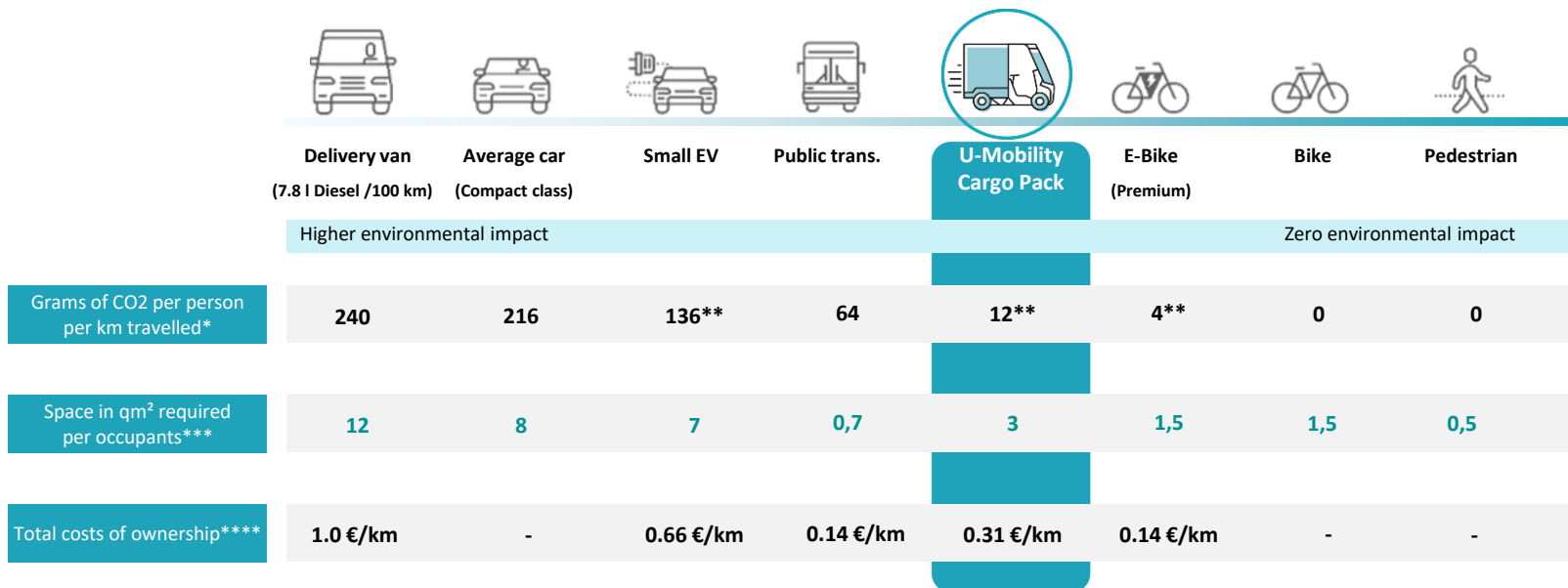
Mubea U-Mobility – who we are



- We rethink micro mobility: **Unique**
- Emission free & sustainable: **Urban**
- With the focus on people: **You**
- Tailored to the application, unique in functionality



Small CO2 footprint. Space-saving. Low cost of ownership.



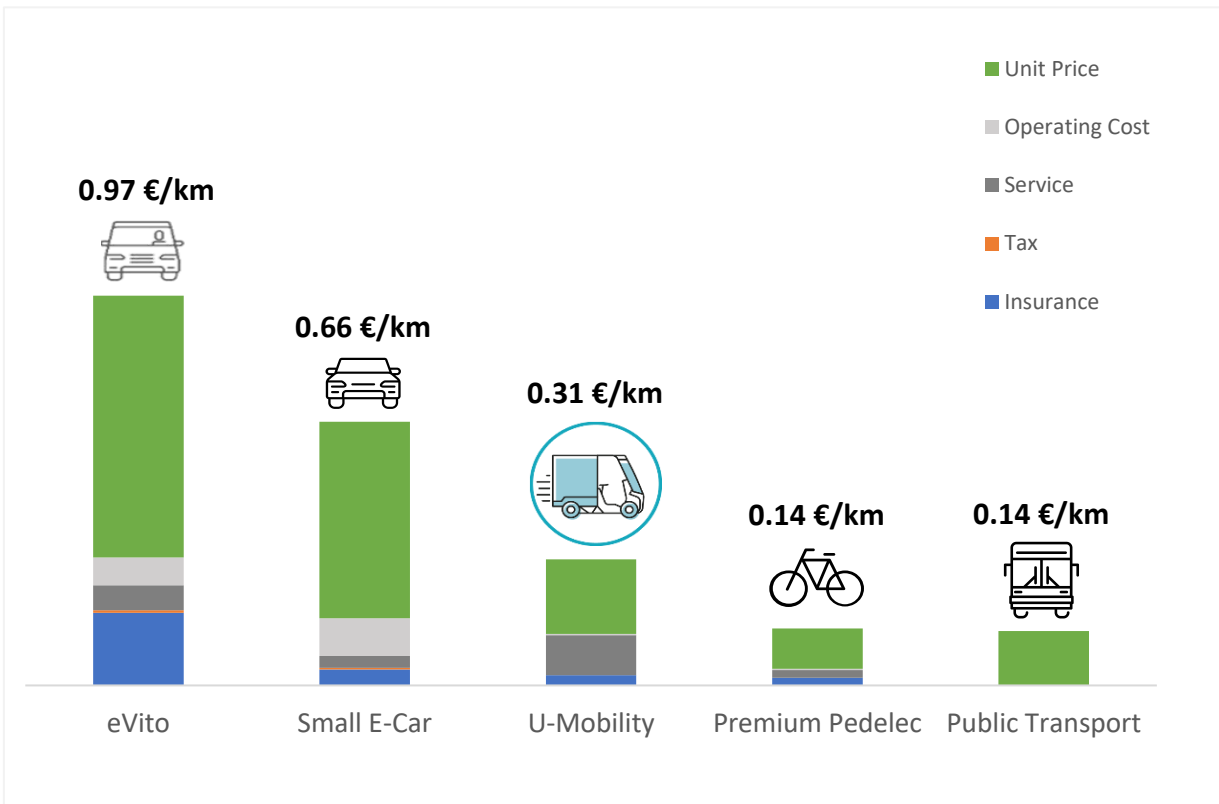
* Based on calculations by the Institute for Energy and Environmental Research Heidelberg; source: Quarks 04/2022 (<https://www.quarks.de/umwelt/klimawandel/co2-rechner-fuer-auto-flugzeug-und-co/>)

** German electricity mix

*** in house assumptions

**** Based on calculations by ADAC & in house assumptions (Unit price + Operating costs + Service + Tax + Insurance Package)

Total Cost of Ownership (TCO)



- Van: eVito (60 kWh)
- Small E-Car: Renault Zoé R110 EV 50 110hp (52kWh battery)
- Mubea U-Mobility Cargo Pack 1.9
- Premium Pedelec: Riese & Mueller (Superdelite GT Touring)
- Public Transport: Munich area + 6 zone (annual subscription)

Product portfolio

CARGO



XBOARD



German Bionic





CARGO

When over 100 years of automotive development experience meets the most innovative manufacturing technology and passion in the development of a cargo bike, a new type of vehicle is born – an e-cargo bike that changes the status quo.

Our cargo family as a solution for your operation



- 7-speed automatic transmission
- Powerful 130 Nm torque
- Max. electrically assisted speed at 25 km/h
- Electric starting assistance up to 6 km/h
- Integrated reverse gear
- Permitted total weight up to 500 kg
- Payload up to 200 kg (box)
- Pallet dimensions in the box (L 1,200 mm x W 800 mm)
- Box volume of up to 1.9 m³ depending on structure
- Turning circle < 5,500 mm
- Changeable battery system with 2 slots (2 x 1.24 kWh)
- Range up to 100 km



Innovations forged by Mubea

- A lightweight, robust frame made of durable aerospace aluminum. Constructed for high expectations and heavy loads.
- Your contact with the road. 16-inch performance aluminum wheels with motorbike tyres, specially developed for cargo bike use.
- Double wishbones on the front and rear axles with a spring suspension strut and stabiliser bars for maximum comfort and precise response.
- Specially designed front bumper and side edge protection made of expanded polypropylene combines design and safety.



Product portfolio



Cargo PACK 1.6 & Driver's cab
from 15,088 € up

Cargo PACK 1.9 & Driver's cab
from 15,638 € up



Cargo PACK 1.3 & Moped
windshield
from 12,589 € up



Cargo WORK
from 14,988 € up



Cargo PICK-UP
from 11,589 € up

Target group

Whether it's parcel delivery, campus logistics, advertising platform or providing services, as a single vehicle or in a fleet – we offer strong solutions for every industry.

Business application / B2B

Delivery transport

Parcel delivery for urban logistics
Catering services
Mail deliveries

Campus transport

Industrial companies with campus
Industrial / business parks
Vacation resorts / recreational park
National parks or zoos

Service related transports

Healthcare services
Craftsmen
Facility management
City / municipal administration

Other transports

"Car-free" housing estates
Historic town centers
Spas & islands



A man with a beard and sunglasses, wearing a white t-shirt and a light blue denim jacket, is riding a black and silver XBOARD e-scooter on a gravel path. The path is lined with tall green trees and a low concrete wall. The background shows a clear blue sky and more trees in the distance.

XBOARD

Our e-scooter combines convenient mobility for the last mile with a new feeling: surfing the city streets.

XBOARD

XBoard Experience

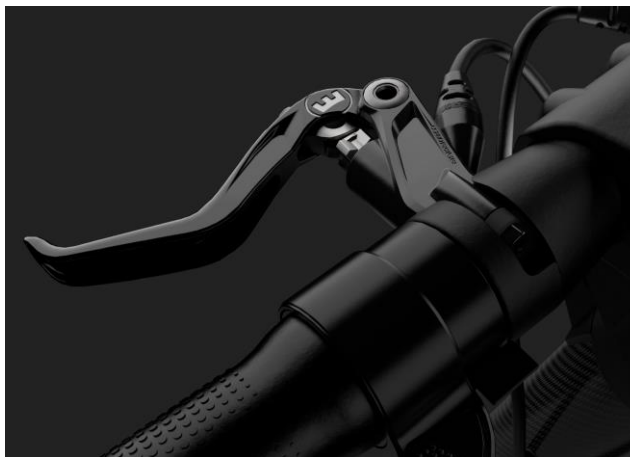
Mubea
U·MOBILITY



- Surf feeling on the last mile
- Surfing safely through the city
- The chassis for a new kind of flow
- Still your buddy when you arrive

XBoard Technology

- The XBoard has a specially developed drivetrain and a high-torque engine. It's quick of the mark and powerful, perfect for that surf feeling on the city streets.
- The battery is housed in the steering column – elegantly hidden and with benefits in terms of handling.
- Two front wheels with independent suspension provide unmatched handling and directional stability for small city scooters when going around corners and even on bumpy roads.
- The XBoard is equipped with independent suspension on both front wheels and the rear wheel.





Up to 30 km pure
electric range



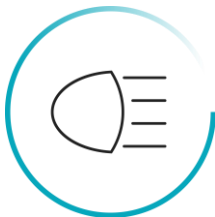
Full suspension front &
rear



Hydraulic disc brakes
front & rear



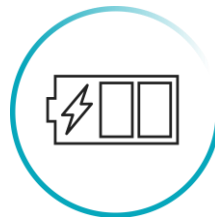
8.5 inch
pneumatic tires



LED front, rear & signal
lights



17.5 kg
total weight



48 volt
battery



Smart folding
mechanism



About German Bionic



- German Bionic is a European robotics firm that develops and manufactures smart power suits and other wearable technologies.
- It was the world's first company to deliver connected exoskeletons for the workplace, applying self-learning and artificial intelligence to support lifting movements and prevent poor posture, and thereby becoming an intelligent link between humans and machines.



Smarter, lighter, and more versatile



- With 66 lb (30 kg) support per lifting movement and active walking assistance, the Apogee reduces the level of physical exertion required of workers while conducting their tasks.
- At the same time, organizations will be provided with real-time insights to enable safer workplace ecosystems.

A low-angle, upward-looking photograph of several modern skyscrapers with glass and metal facades. The buildings are partially framed by lush green trees in the foreground, with sunlight filtering through the leaves on the right side, creating a warm, hazy atmosphere. The sky is a clear, pale blue.

THANK YOU!

Contact

Muhr und Bender KG

Mubea-Platz 1

D-57439 Attendorn

www.mubea-umobility.com

umobility@mubea.com

+49 (0) 2722 62 0