

Mubea

U-MOBILITY



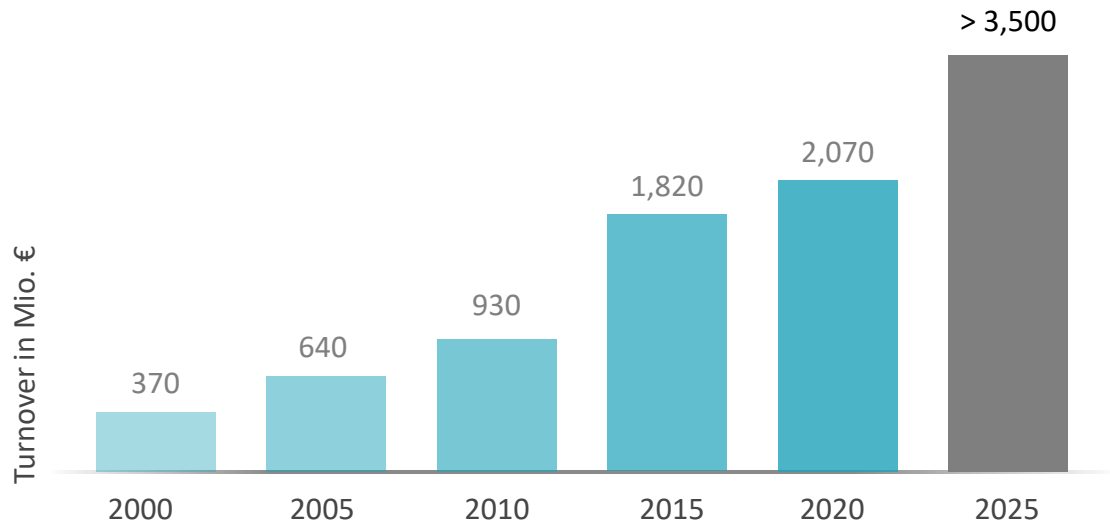
MUBEA U-MOBILITY

COMPANY PRESENTATION

- Family-owned business since 1916
- World market leader in the development and manufacture of complex automotive components
- Innovative lightweight specialist
- Vertical integration from raw material to end product
- Focus on technical innovations and sustainable business development with an impact on the environment



Mubea in numbers



Key figures 2023

3,100

billion € turnover

17,000

employees

54

locations

10%

investment ratio as a
proportion of
turnover

26,404

submitted
improvement
suggestions

108

years of experience

Our mission

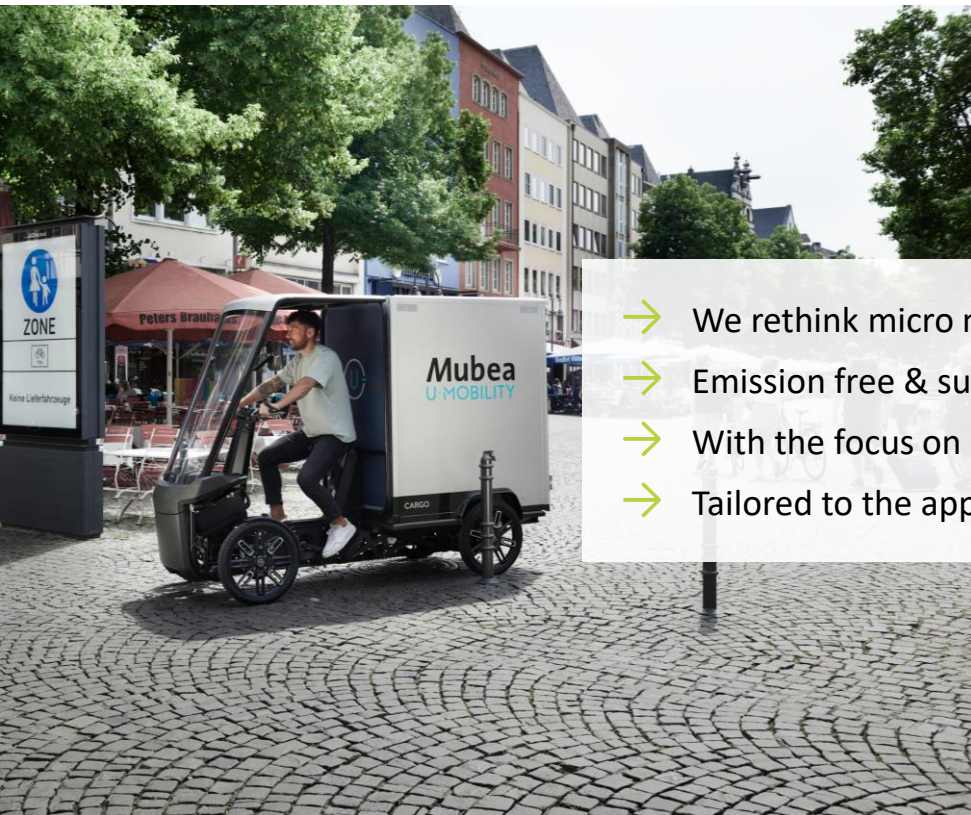


“As innovative lightweight specialist Mubea is shaping sustainability within the automotive industry. With the foundation of Mubea U-Mobility we think mobility beyond the automobile. We develop emission-free micro mobility vehicles which reach a new level of robustness, functionality and driver safety.

For sustainable, comfortable and efficient urban mobility and logistics.“

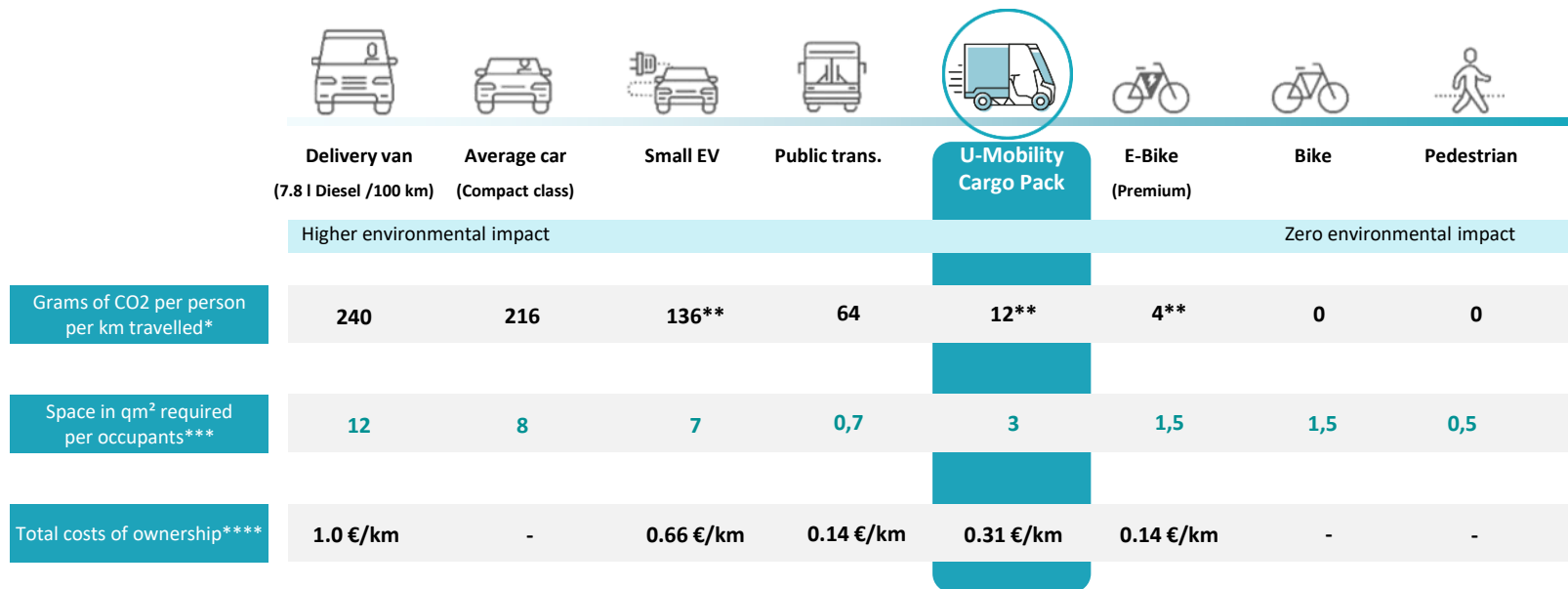
Dr.-Ing. Dr.-Ing. E.h. Thomas Muhr, CEO

Mubea U-Mobility – who we are



- We rethink micro mobility: **Unique**
- Emission free & sustainable: **Urban**
- With the focus on people: **You**
- Tailored to the application, unique in functionality

Small CO2 footprint. Space-saving. Low cost of ownership.



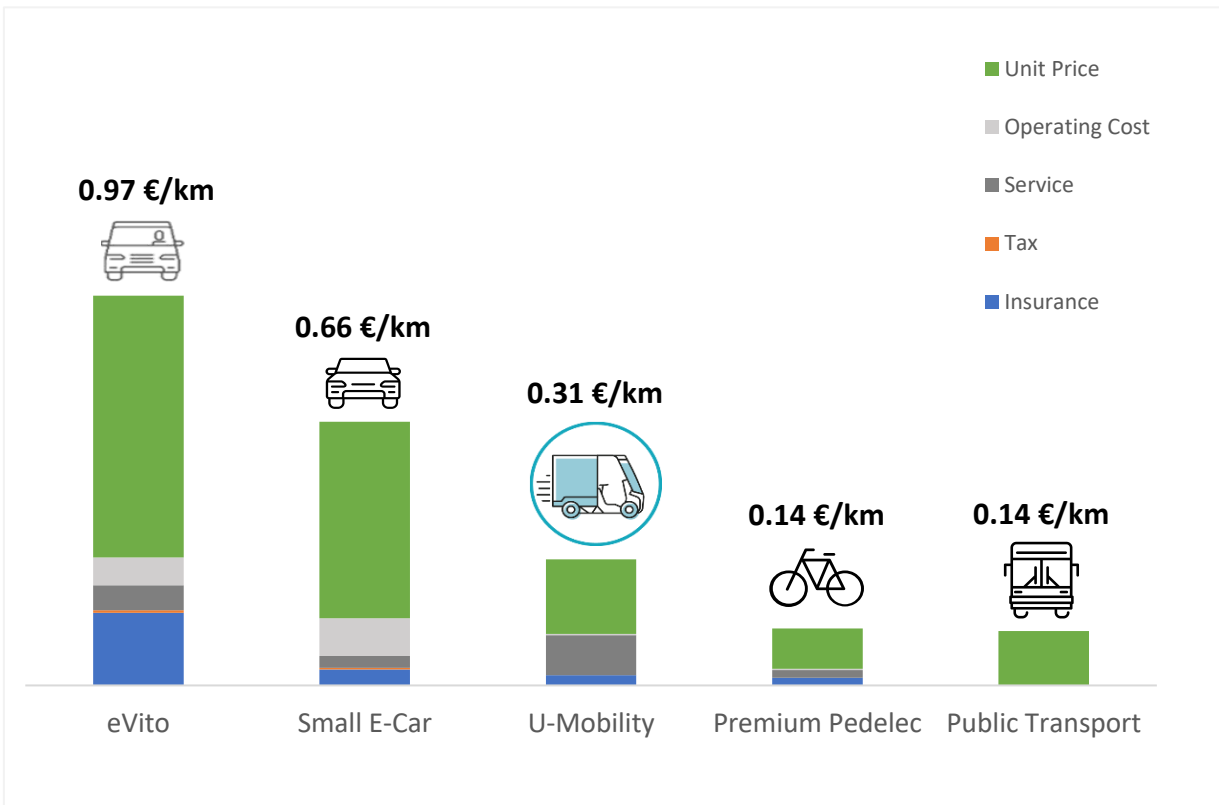
* Based on calculations by the Institute for Energy and Environmental Research Heidelberg; source: Quarks 04/2022 (<https://www.quarks.de/umwelt/klimawandel/co2-rechner-fuer-auto-flugzeug-und-co/>)

** German electricity mix

*** in house assumptions

**** Based on calculations by ADAC & in house assumptions (Unit price + Operating costs + Service + Tax + Insurance Package)

Total Cost of Ownership (TCO)



- Van: eVito (60 kWh)
- Small E-Car: Renault Zoé R110 EV 50 110hp (52kWh battery)
- Mubea U-Mobility Cargo Pack 1.9
- Premium Pedelec: Riese & Mueller (Superdelite GT Touring)
- Public Transport: Munich area + 6 zone (annual subscription)

Product portfolio

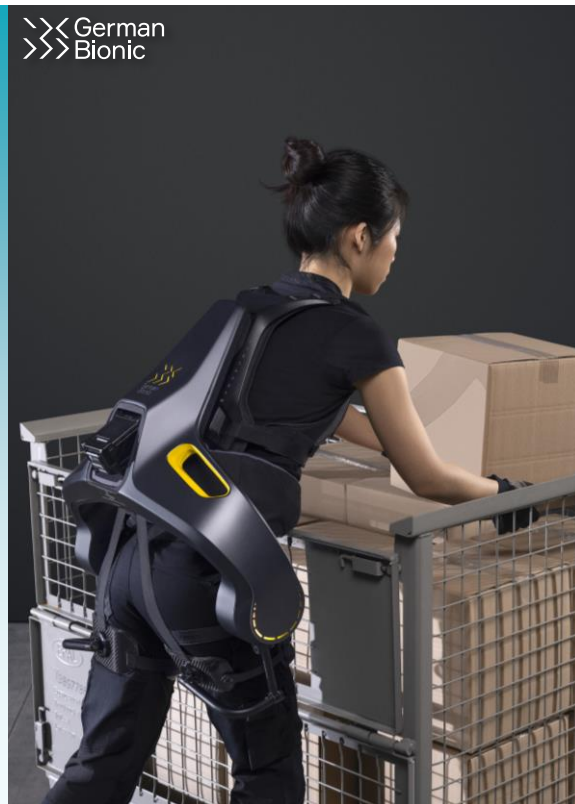
CARGO



XBOARD



German Bionic





CARGO

When over 100 years of automotive development experience meets the most innovative manufacturing technology and passion in the development of a cargo bike, a new type of vehicle is born – an e-cargo bike that changes the status quo.

Our cargo family as a solution for your operation



- Mubea Chainless Powertrain Pro 1
- 2-speed transmission with manual boost gear
- Climbing power (fully loaded) up to 18% with boost gear
- Max. electrically assisted speed at 25 km/h
- Electric starting assistance up to 4 km/h
- Integrated reverse gear, reverse light, warning light, and beep
- Permitted total weight up to 585 kg
- Payload up to 200 kg (box)
- Pallet dimensions in the box (L 1,300 mm x W 800 mm)
- Box volume of up to 1.9 m³ depending on structure
- Turning circle (< 6,750 mm)
- Changeable battery system with 2 slots (2 x 1.44 kWh)
- Range up to 50 km (with 2 slots)

Innovations forged by Mubea

- A lightweight, robust frame made of durable aerospace aluminum. Constructed for high expectations and heavy loads.
- Your contact with the road. 16-inch performance aluminum wheels with motorbike tyres, specially developed for cargo bike use.
- Double wishbones on the front and rear axles with a spring suspension strut and stabiliser bars for maximum comfort and precise response.
- Specially designed front bumper and side edge protection made of expanded polypropylene combines design and safety.



Product portfolio



Cargo PACK 1.6 & Driver's cab
from 17,488 € up

Cargo PACK 1.9 & Driver's cab
from 17,788 € up



Cargo WORK
from 17,588 € up



Cargo PICK-UP
from 13,589 € up

Target group

Whether it's parcel delivery, campus logistics, advertising platform or providing services, as a single vehicle or in a fleet – we offer strong solutions for every industry.

Business application / B2B

Delivery transport

Parcel delivery for urban logistics
Catering services
Mail deliveries

Campus transport

Industrial companies with campus
Industrial / business parks
Vacation resorts / recreational park
National parks or zoos

Service related transports

Healthcare services
Craftsmen
Facility management
City / municipal administration

Other transports

"Car-free" housing estates
Historic town centers
Spas & islands



A man with a beard and sunglasses, wearing a white t-shirt and a light blue denim jacket, is riding a black and silver XBOARD e-scooter on a gravel path. The path is lined with tall, green trees and a low concrete wall. In the background, other people can be seen walking on the path. The sky is clear and blue.

XBOARD

Our e-scooter combines convenient mobility for the last mile with a new feeling: surfing the city streets.

Our XBoard – Light. Powerful. Flexible



- Individually developed powertrain
- Lightweight folding frame with a one-click folding mechanism made of magnesium, carbon fiber and glass fiber plastic
- 48 V lithium-ion battery, 336 Wh & 2.5 h charging time
- Full suspension front & rear
- Hydraulic disc brakes front & rear plus motor brake via button on the handlebar
- Three pneumatic tires (8.5 inches)
- Gradient capability up to 20%
- Range up to 30 km
- 18 kg incl. battery
- Max. speed up to 20 km/h (electrically assisted)
- Three speed modes (Walk, Eco & Sport)
- Immobilizer via PIN code
- LED front, rear, & signal lights

XBoard Experience



- Your street surfboard
- Design and technology cleverly combined
- Tilting technology that takes your riding experience to a new level
- Safe fun thanks to two front wheels with independent suspension
- Folded up in one second - the feature with the click
- Simply unfold, hop on, and start surfing

XBoard Technology

- The XBoard has a specially developed drivetrain and a high-torque engine. It's quick of the mark and powerful, perfect for that surf feeling on the city streets.
- Due to groundbreaking lightweight construction technology and an innovative chassis design with a unique folding mechanism, the XBoard combines practical utility, unbeatable ride comfort, and high safety.
- The motor power can be adjusted individually with the three driving modes Walk, Eco, and Sport.
- The battery is housed in the steering column – elegantly hidden and with benefits in terms of handling.
- All three 8.5-inch wheels are fully suspended and equipped with effective hydraulic disc brakes - additionally, the XBoard can also be braked with a motor brake via a button on the handlebar.



Benefits



Up to 30 km pure
electric range



Full suspension front
& rear



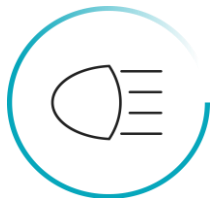
Hydraulic disc brakes
front & rear



8.5 inch
pneumatic tires



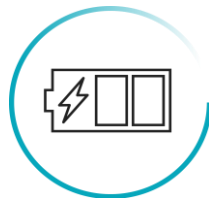
Powerful engine
with maximum torque



LED front, rear & signal
lights



18 Kg
total weight



48 volt
battery



Smart folding
mechanism



About German Bionic



- German Bionic is a European robotics firm that develops and manufactures smart power suits and other wearable technologies.
- It was the world's first company to deliver connected exoskeletons for the workplace, applying self-learning and artificial intelligence to support lifting movements and prevent poor posture, and thereby becoming an intelligent link between humans and machines.



Smarter, lighter, and more versatile



- With 66 lb (30 kg) support per lifting movement and active walking assistance, the Apogee reduces the level of physical exertion required of workers while conducting their tasks.
- At the same time, organizations will be provided with real-time insights to enable safer workplace ecosystems.

A low-angle, upward-looking photograph of several modern skyscrapers with glass and metal facades. The buildings are set against a clear, light blue sky. In the foreground, the green, leafy branches of trees frame the bottom and sides of the image, adding a natural element to the urban scene. The perspective creates a sense of height and architectural grandeur.

THANK YOU!

Contact

Muhr und Bender KG

Mubea-Platz 1

D-57439 Attendorn

www.mubea-umobility.com

umobility@mubea.com

+49 (0) 2722 62 0